

Takes about 2½ hours.

Leave the airport

There is only one road that leads away from the airport and it's easy to find. Assuming that you have picked up a car from one of the rental agencies, you just need to turn right at the traffic lights.

Onto the national highway

As you drive away from the airport, take the right-hand fork before the bridge, onto the national highway.

Stay on the national highway

The main part of the route. Just stick with it, and don't worry that you've gone too far. If you're fortunate enough to be driving in the daytime, it's beautiful.

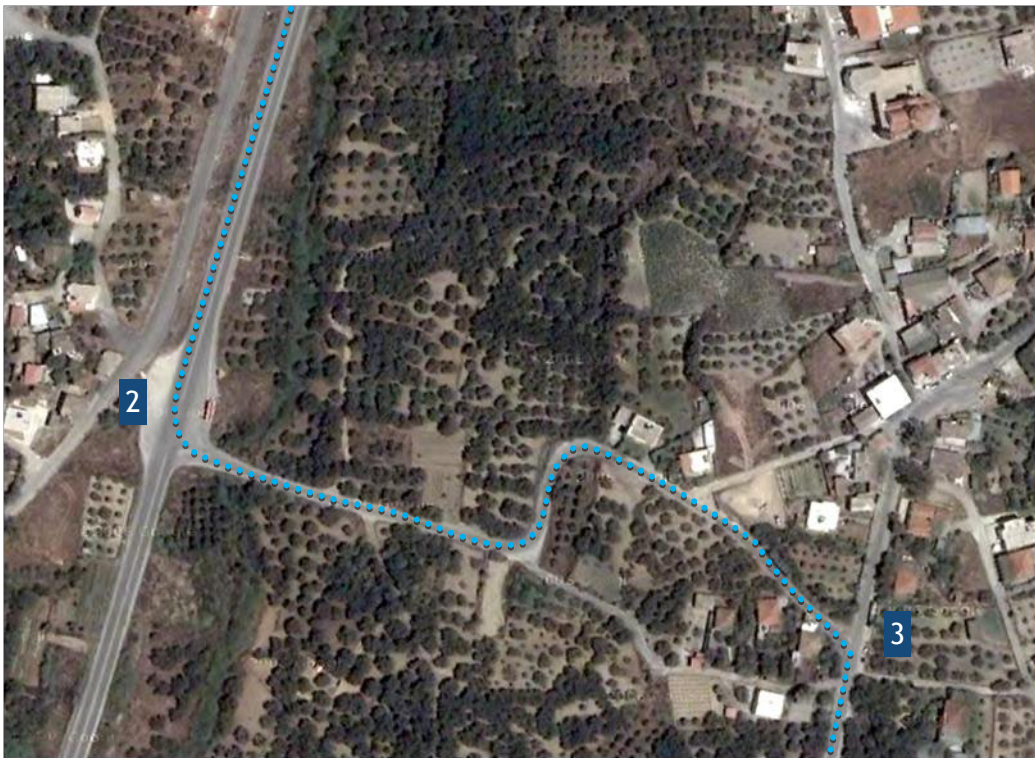
Rethymno is about halfway, and after you pass Chania you should start looking out for signs for Kissamos, that means you're getting close! Look out for signs for KOLYMPARI.

Under the Kolympari bridge

Shortly afterwards, you'll go under a bridge at the Kolympari exit **1**. The turning you want is exactly 4.2km from the bridge, so reset your odometer!

Turn left

After 4.2kms (shortly after the exit for ASPRA NERA and KALEDONIA), you'll see that the road widens considerably. Take the turn on the left **2**.



Kaledonia

Drive up and into Kaledonia village. Turn right at the T-junction **3**. Continue to follow this road for about 4kms. About one and a half kms after you leave Kaledonia you'll come to a hairpin bend. Ensure you **keep right** around the bend.

Go through Plakalona

As you leave Plakalona **4**, admire the view as it unfolds! Start counting hairpins down the hill...when you reach the third, turn right **5**, following the signpost to Terramara.

Arrive at Terramara

Welcome!

